

# Busbar supports

## Busbar

### Male to female high withstand insulator

#### References

Height H (mm)	Insert M	Depth D (mm)	Diameter E (mm)	Length W (mm)	Pack qty	Reference
16	M4	5	14	10	1	5038 1604
16	M5	5	14	10	1	5038 1605
25	M5	5	20	10	1	5038 2505
25	M6	5	20	10	1	5038 2506
35	M8	8	32	15	1	5038 3508
35	M10	8	32	30	1	5038 3510
50	M8	14	46	25	1	5038 5008
50	M10	14	46	30	1	5038 5010
60	M10	16	50	25	1	5038 6010



sb\_106\_a\_2\_cat

### Male to male high withstand insulator

#### References

Height H (mm)	Insert M	Diameter E (mm)	Length W (mm)	Pack qty	Reference
16	M4	14	10	1	5039 1604
16	M5	14	10	1	5039 1605
25	M5	14	10	1	5039 2505
25	M6	20	10	1	5039 2506
35	M8	32	15	1	5039 3508
35	M10	32	30	1	5039 3510
50	M8	46	25	1	5039 5008
50	M10	46	30	1	5039 5010
60	M10	38	25	1	5039 6010

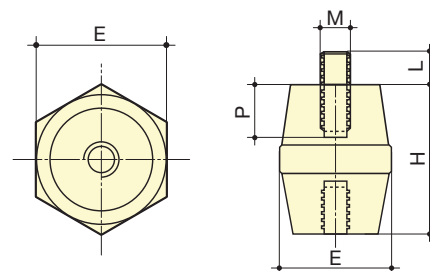


sb\_107\_a\_2\_cat

### Hexagonal insulator male to female and male to male

#### Characteristics

Height H (mm)	Insert M	Nominal voltage (V) AC/DC	Insulation voltage		Mechanical characteristics (daN)		Max. tightening torque (Nm)
			(VAC) 50 Hz 1 min	Peak	Flexion	Tention	
16	M4	500	3000	5500	100	150	3
16	M5	500	3000	5500	100	150	6
25	M5	500	3000	11000	180	400	6
25	M6	500	3000	11000	180	400	12
35	M8	1400	9000	16000	380	900	42
35	M10	1400	9000	16000	320	800	44
50	M8	2000	12000	21500	650	1800	60
50	M10	2000	12000	21500	650	1700	70
60	M10	2400	12000	27000	560	1600	85



sb\_088\_b\_1\_x\_cat

### Headless screw

#### References

Length (mm)	Thread	To be ordered in multiples of	Reference
20	M6	20	5032 2006
20	M8	20	5032 2008
25	M6	20	5032 2506
25	M8	20	5032 2508
30	M6	20	5032 3006
30	M8	20	5032 3008
40	M8	20	5032 4008
40	M10	20	5032 4010
50	M12	20	5032 5012



sb\_121\_a\_2\_cat